

COMMONWEALTH PARLIAMENTARY ASSOCIATION

“To promote knowledge of the constitutional, legislative, economic, social and cultural aspects of parliamentary democracy, with particular reference to the countries of the Commonwealth.” Our Mission

Find out more here: www.cpahq.org



The Commonwealth Parliamentary Association (CPA) is an international community of Commonwealth Parliaments and Legislatures working together to deepen the Commonwealth’s commitment to the highest standards of democratic governance and parliamentary practice.

The CPA is one of the oldest established organisations in the Commonwealth. Founded in 1911, it is a membership association which brings together Parliamentarians and parliamentary officials, irrespective of gender, race, religion or culture, who are united by community of interest, respect for the rule of law and individual rights and freedoms, and by the pursuit of the positive ideals of parliamentary democracy.

The Association is made up of almost 180 Legislatures divided up between nine geographic regions of the Commonwealth. It offers a vast opportunity for Parliamentarians and parliamentary staff to collaborate on issues of mutual interest and to share good practice.



THE CPA IN FIGURES

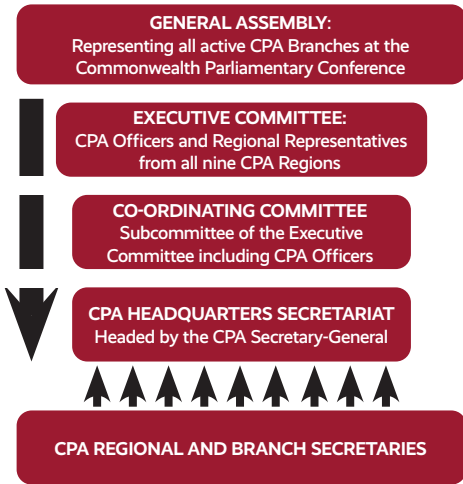
17,000
PARLIAMENTARY
MEMBERS (APPROX.)

180
LEGISLATURES/
PARLIAMENTS (MAKE UP
THE ASSOCIATION)

3
NETWORKS
(SUPPORTED BY THE
ASSOCIATION)

114
NUMBER OF YEARS THE
ASSOCIATION HAS BEEN
WORKING

How is the CPA organised?



- The CPA is governed by a long-standing **Constitution** updated in 2024.
- The **General Assembly** is the ultimate authority of the CPA.
- The **Executive Committee** usually meets twice a year and is made up of CPA Officers and Regional Representatives.
- CPA Officers meet as the **Coordinating Committee**: Chairperson of the Executive Committee (elected by the General Assembly for three years); the Vice-Chairperson (a Regional Representative elected by the Executive Committee for one year); the Treasurer (elected by the General Assembly for three years); and the Chairs of the CPA Small Branches, Commonwealth Women Parliamentarians (CWP) and the Commonwealth Parliamentarians with Disabilities (CPwD) (each elected by their networks for three years).
- The **CPA Headquarters Secretariat**, headed by the **CPA Secretary-General**, administers the CPA with support from **Regional and Branch Secretaries**, usually senior parliamentary staff who mobilise the resources of their Parliaments in pursuit of the aims and activities of the CPA.

What are CPA Branches?

- The CPA represents almost **180** Parliaments and Legislatures in **53 out of 56** Commonwealth countries.
- The CPA network extends to over **17,000** Parliamentarians and parliamentary staff.
- The CPA is the only Commonwealth organisation to represent **national, state, provincial and territorial Parliaments and Legislatures**.
- CPA Branches are democratic, law-making Parliaments and Legislatures.
- All CPA Branches are autonomous and regarded as equal.
- There are nine regions of the CPA: **Africa; Asia; Australia; British Islands and Mediterranean; Canada; Caribbean, Americas and the Atlantic; India; Pacific; South-East Asia**.

What are the CPA Networks?



- **Commonwealth Women Parliamentarians (CWP)** seeks to promote the representation of women in CPA Branches and women's full and equal participation in all political and parliamentary leadership at all levels.



- **CPA Small Branches** network represents Commonwealth jurisdictions with populations under 1,000,000.



- **Commonwealth Parliamentarians with Disabilities (CPwD)** seeks to enable effective and full participation of persons with disabilities at all levels.

What is our Parliamentary Institutional Strengthening and Professional Development work?

Our primary focus is to deliver programmes and projects to our Members which are consistently **impact-oriented, effective, sustainable, cost-effective, innovative and of the highest standards**. Our dual programmes' strategy comprises of **professional development** and **institutional strengthening**. Both approaches are undertaken on a **multilateral** and **bilateral** basis to ensure a depth and breadth of learning across our membership.

We undertake this work through the following programmes/projects/outputs:

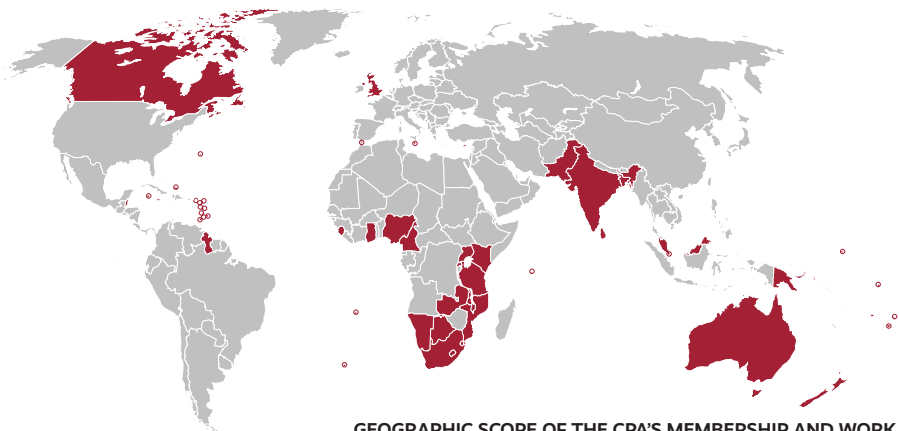
- Annual Commonwealth Parliamentary Conference;
- The CPA Parliamentary Academy;
- CPA Post-Election Seminars;
- CPA Benchmarks for Democratic Legislatures Assessment Project;
- Technical Assistance Programmes;
- Research Services;
- Thematic Workshops, Webinars and Conferences on topics ranging from the SDGs to the Latimer House Principles and Climate Change;
- Toolkits, Handbooks and resource development;
- Regional Strengthening Funds;
- Scholarship schemes;
- Capital Investment schemes.



What is our approach to Communications and Outreach?

The CPA is constitutionally mandated to keep our membership apprised of developments and trends across Commonwealth Legislatures. We also believe it is important to communicate and promote our work to a global audience. We do this in the following ways:

- The CPA publishes ***The Parliamentarian***, the quarterly Journal of Commonwealth Parliaments featuring articles written by and for Parliamentarians and parliamentary reports.
- Regular e-newsletter the '**CPA Order Paper**' is published quarterly to our membership.
- **Directory** online of Commonwealth Parliaments and Legislatures available to the membership at www.cpahq.org.
- **Blog-posts** and **Podcasts** are published on the CPA website.
- Events, webinars and other activities are delivered for our membership and broader stakeholders.
- We use a wide range of communication channels to share information, these include: [Twitter](#), [Facebook](#), [Instagram](#), [YouTube](#) and [LinkedIn](#).



GEOGRAPHIC SCOPE OF THE CPA'S MEMBERSHIP AND WORK

How do we engage with Youth?

Youth engagement is central to the values of the CPA. Our work seeks to promote democratic governance across the Commonwealth and to connect parliamentarians with young people. We undertake this work in the following ways:

- **Commonwealth Youth Parliament;**
- **Commonwealth Day resource packs;**
- **CPA Roadshows;**
- **Publishing resources on youth engagement.**



Who do we work with?

The CPA works with a wide range of organisations to deliver programmes which strengthen Commonwealth Parliaments, supports and promotes parliamentary democracy in accordance to the Commonwealth Charter and which aligns with the Sustainable Development Goals. Some of our recent partners include: **inter-governmental organisations; regional organisations; academic institutions; non-governmental organisations; professional training bodies; private businesses; think tanks and other research bodies.**



SOME OF OUR RECENT RESOURCES AND PUBLICATIONS



The Commonwealth Parliamentary Association is an **International inter-parliamentary organisation.**

INVESTORS IN PEOPLE
We invest in people Standard

© Commonwealth Parliamentary Association 2025

Cover design and illustrations by Matthew Salik with elements and images sourced from CPA Branches, Shutterstock and Freepik.com.



SIGN-UP TO OUR MAILING LIST

Commonwealth Parliamentary Association (CPA)

CPA Headquarters Secretariat

Richmond House, UK Houses of Parliament
London, SW1A 0AA, United Kingdom

Tel: +44 (0)20 7799 1460 | Email: hq.sec@cpahq.org

Web: www.cpahq.org